

MONITORING DATA

Bridgeport Day Fine Project
Cases Sentenced to Day Fines from May 19 to June 30, 1992
59 Offenders Sentenced
71 Fines Imposed

Julie Eigler

VERA INSTITUTE OF JUSTICE
377 Broadway
New York, New York 10013

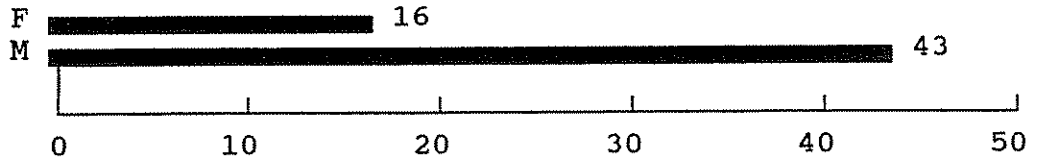
212-334-1300

OFFENDER PROFILE DATA

Sex
By Person

Value Label	Value	Frequency	Percent	Valid Percent	Cum Percent
Female	1	16	27.1	27.1	27.1
Male	2	43	72.9	72.9	100.0
	Total	59	100.0	100.0	

Sex
By Person

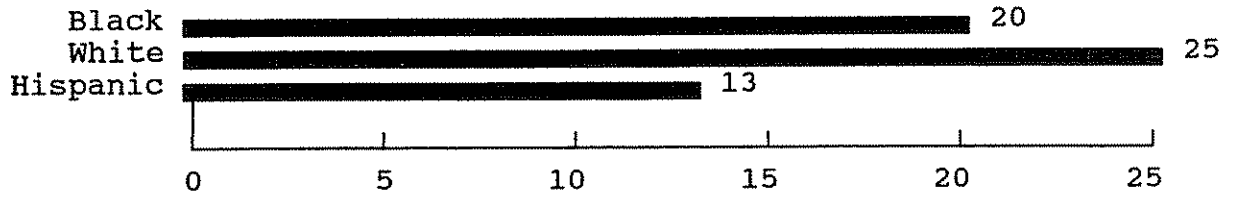


Valid cases 59 Missing cases 0

Ethnicity
By Person

Value Label	Value	Frequency	Percent	Valid Percent	Cum Percent
Black	1.0	20	33.9	34.5	34.5
White	2.0	25	42.4	43.1	77.6
Hispanic	3.0	13	22.0	22.4	100.0
Blank	.	1	1.7	Missing	
Total		59	100.0	100.0	

Ethnicity
By Person

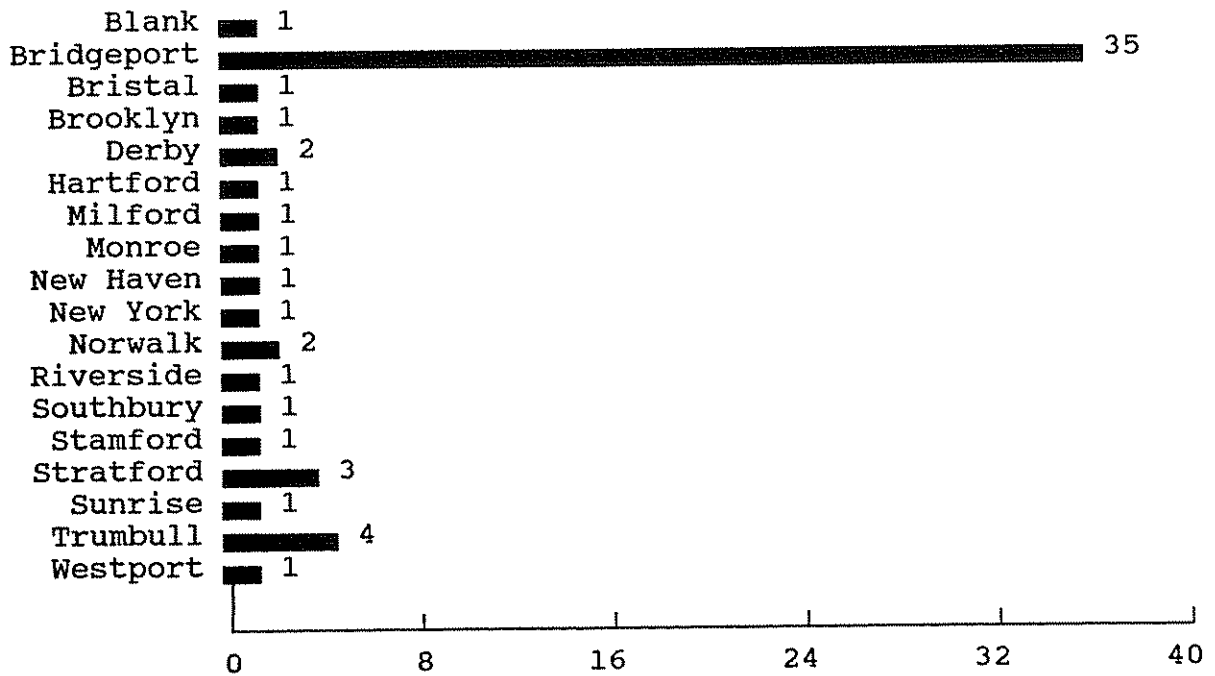


Valid cases 58 Missing cases 1

City of Residence
By Person

Value Label	Value	Frequency	Percent	Valid Percent	Cum Percent
Blank	1	1	1.7	1.7	1.7
Bridgeport	2	35	59.3	59.3	61.0
Bristol	3	1	1.7	1.7	62.7
Brooklyn	4	1	1.7	1.7	64.4
Derby	5	2	3.4	3.4	67.8
Hartford	6	1	1.7	1.7	69.5
Milford	7	1	1.7	1.7	71.2
Monroe	8	1	1.7	1.7	72.9
New Haven	9	1	1.7	1.7	74.6
New York	10	1	1.7	1.7	76.3
Norwalk	11	2	3.4	3.4	79.7
Riverside	12	1	1.7	1.7	81.4
Southbury	13	1	1.7	1.7	83.1
Stamford	14	1	1.7	1.7	84.7
Stratford	15	3	5.1	5.1	89.8
Sunrise	16	1	1.7	1.7	91.5
Trumbull	17	4	6.8	6.8	98.3
Westport	18	1	1.7	1.7	100.0
Total		59	100.0	100.0	

City of Residence
By Person

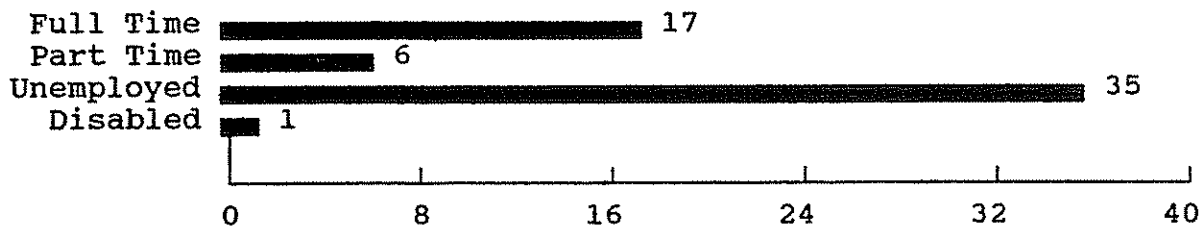


Valid cases 59 Missing cases 0

Type of Employment
By Person

Value Label	Value	Frequency	Percent	Valid Percent	Cum Percent
Full Time	1.0	17	28.8	28.8	28.8
Part Time	2.0	6	10.2	10.2	39.0
Unemployed	3.0	35	59.3	59.3	98.3
Disabled	4.0	1	1.7	1.7	100.0
Total		59	100.0	100.0	

Type of Employment
By Person

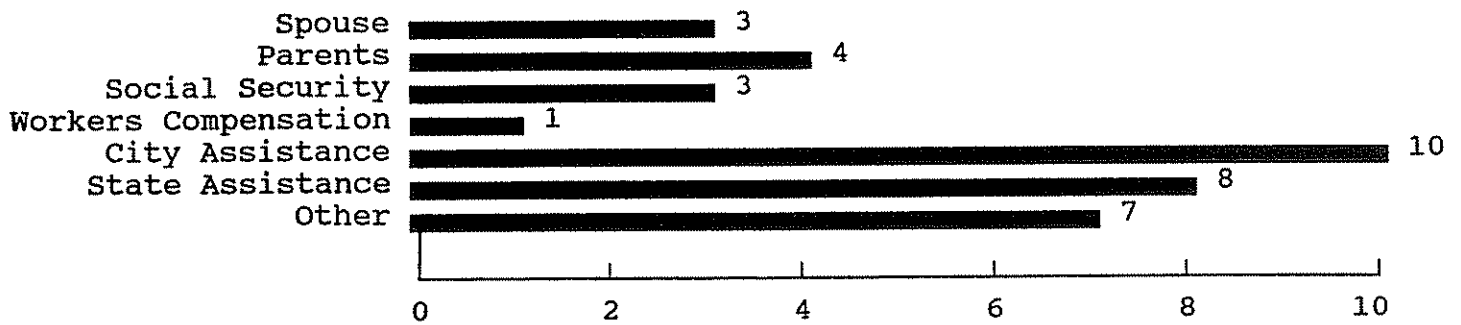


Valid cases 59 Missing cases 0

Source of Income Other than Employment
By Person

Value Label	Value	Frequency	Percent	Valid Percent	Cum Percent
Spouse	1.0	3	5.1	8.3	8.3
Parents	2.0	4	6.8	11.1	19.4
Social Security	4.0	3	5.1	8.3	27.8
Workers Compensation	6.0	1	1.7	2.8	30.6
City Assistance	7.0	10	16.9	27.8	58.3
State Assistance	8.0	8	13.6	22.2	80.6
Other	10.0	7	11.9	19.4	100.0
.	.	23	39.0	Missing	
Total		59	100.0	100.0	

Source of Income Other than Employment
By Person



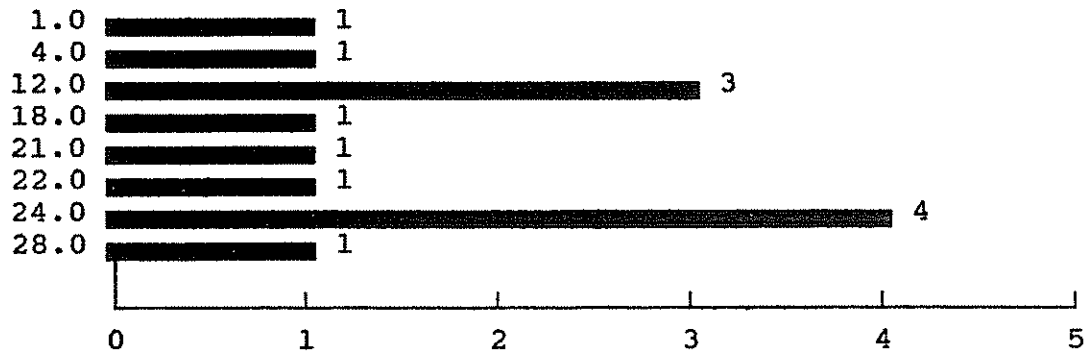
Valid cases 36 Missing cases 23

**Length of Time Unemployed
In Months / By Person**

Value Label	Value	Frequency	Percent	Valid Percent	Cum Percent
	1.0	1	1.7	7.7	7.7
	4.0	1	1.7	7.7	15.4
	12.0	3	5.1	23.1	38.5
	18.0	1	1.7	7.7	46.2
	21.0	1	1.7	7.7	53.8
	22.0	1	1.7	7.7	61.5
	24.0	4	6.8	30.8	92.3
	28.0	1	1.7	7.7	100.0
	.	46	78.0	Missing	
	Total	59	100.0	100.0	

Mean = 17.38 Minimum = 1.00 Maximum = 28.00

**Length of Time Unemployed
In Months / By Person**



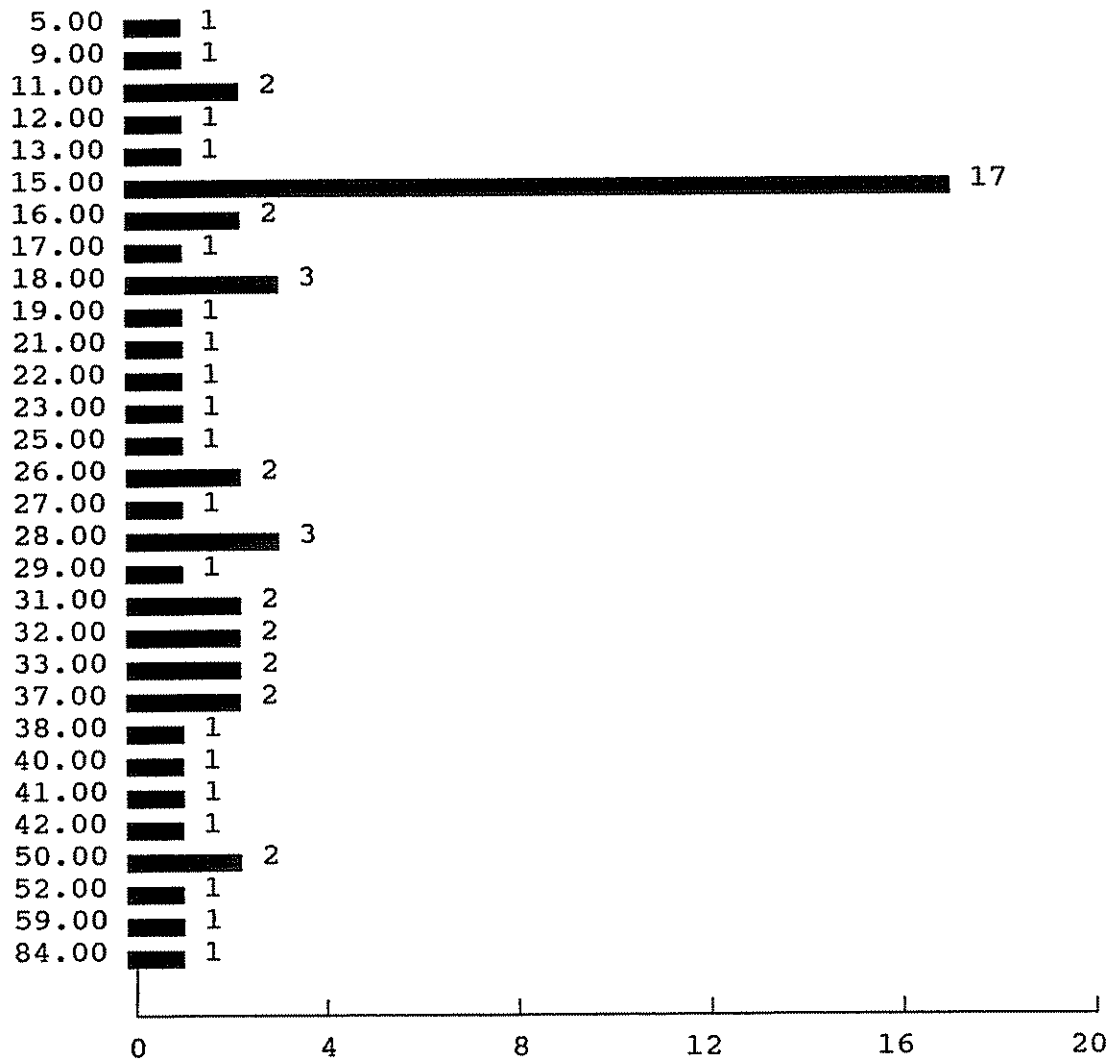
Valid cases 13 Missing cases 46

Net Daily Income
In Dollars / By Person

Value Label	Value	Frequency	Percent	Valid Percent	Cum Percent
	5.00	1	1.7	1.7	1.7
	9.00	1	1.7	1.7	3.4
	11.00	2	3.4	3.4	6.9
	12.00	1	1.7	1.7	8.6
	13.00	1	1.7	1.7	10.3
	15.00	17	28.8	29.3	39.7
	16.00	2	3.4	3.4	43.1
	17.00	1	1.7	1.7	44.8
	18.00	3	5.1	5.2	50.0
	19.00	1	1.7	1.7	51.7
	21.00	1	1.7	1.7	53.4
	22.00	1	1.7	1.7	55.2
	23.00	1	1.7	1.7	56.9
	25.00	1	1.7	1.7	58.6
	26.00	2	3.4	3.4	62.1
	27.00	1	1.7	1.7	63.8
	28.00	3	5.1	5.2	69.0
	29.00	1	1.7	1.7	70.7
	31.00	2	3.4	3.4	74.1
	32.00	2	3.4	3.4	77.6
	33.00	2	3.4	3.4	81.0
	37.00	2	3.4	3.4	84.5
	38.00	1	1.7	1.7	86.2
	40.00	1	1.7	1.7	87.9
	41.00	1	1.7	1.7	89.7
	42.00	1	1.7	1.7	91.4
	50.00	2	3.4	3.4	94.8
	52.00	1	1.7	1.7	96.6
	59.00	1	1.7	1.7	98.3
	84.00	1	1.7	1.7	100.0
	.	1	1.7	Missing	
	Total	59	100.0	100.0	

Mean = 24.88 Minimum = 5.00 Maximum = 84.00

Net Daily Income
In Dollars / By Person



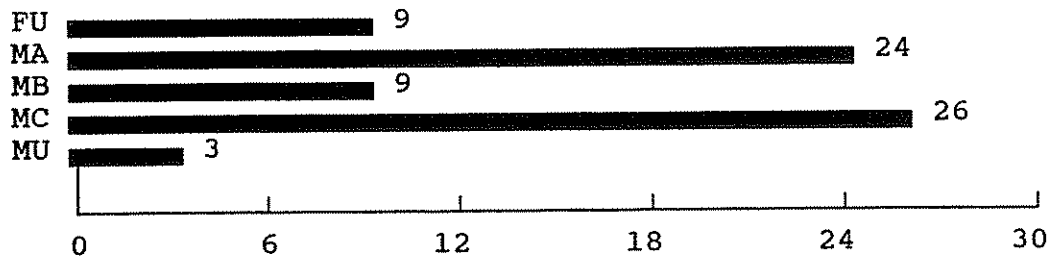
Valid cases 58 Missing cases 1

OFFENSES SANCTIONED WITH DAY FINES

Class of Offense

Value Label	Value	Frequency	Percent	Valid Percent	Cum Percent
FU	1	9	12.7	12.7	12.7
MA	2	24	33.8	33.8	46.5
MB	3	9	12.7	12.7	59.2
MC	4	26	36.6	36.6	95.8
MU	5	3	4.2	4.2	100.0
Total		71	100.0	100.0	

Class of Offense

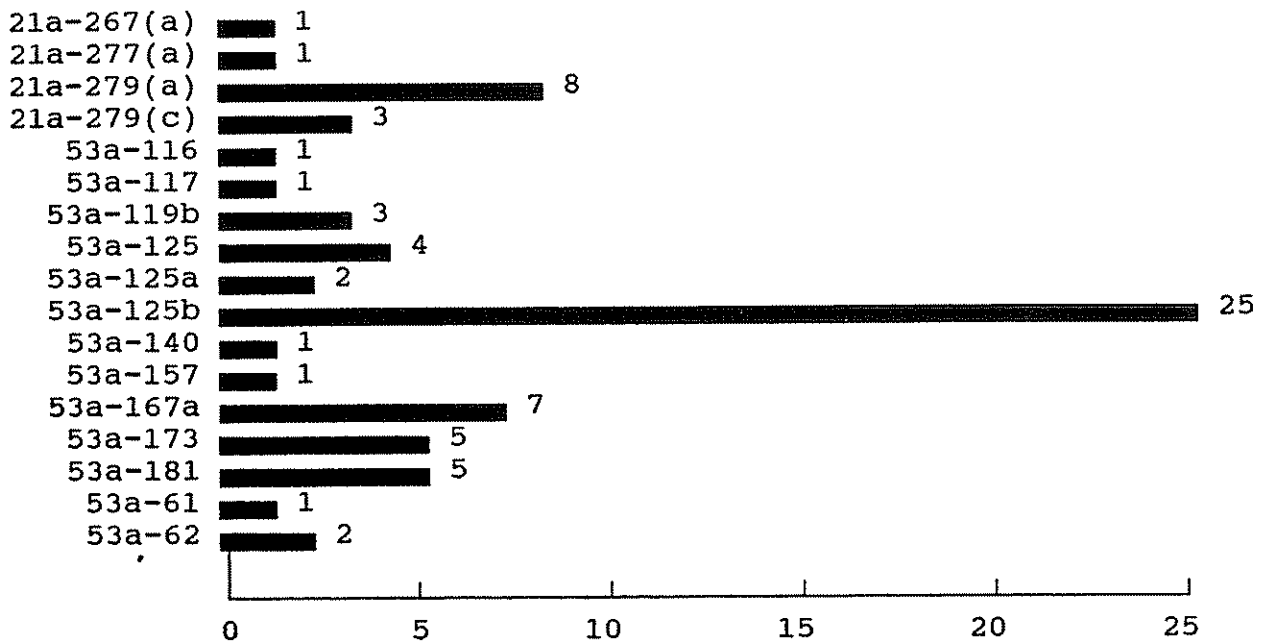


Valid cases 71 Missing cases 0

Statute Number

Value Label	Value	Frequency	Percent	Valid Percent	Cum Percent
21a-267(a)	1	1	1.4	1.4	1.4
21a-277(a)	2	1	1.4	1.4	2.8
21a-279(a)	3	8	11.3	11.3	14.1
21a-279(c)	4	3	4.2	4.2	18.3
53a-116	5	1	1.4	1.4	19.7
53a-117	6	1	1.4	1.4	21.1
53a-119b	7	3	4.2	4.2	25.4
53a-125	8	4	5.6	5.6	31.0
53a-125a	9	2	2.8	2.8	33.8
53a-125b	10	25	35.2	35.2	69.0
53a-140	11	1	1.4	1.4	70.4
53a-157	12	1	1.4	1.4	71.8
53a-167a	13	7	9.9	9.9	81.7
53a-173	14	5	7.0	7.0	88.7
53a-181	15	5	7.0	7.0	95.8
53a-61	16	1	1.4	1.4	97.2
53a-62	17	2	2.8	2.8	100.0
Total		71	100.0	100.0	

Statute Number



Valid cases 71 Missing cases 0

Number of Day Fine Units Imposed by Class of Offense

Count	OFFCLASS					Row Total
	FU	MA	MB	MC	MU	
1.0		2	1	1		4 5.6
2.0				3		3 4.2
3.0		1		2		3 4.2
4.0		2		4		6 8.5
5.0				5		5 7.0
6.0		1				1 1.4
7.0			2	2		4 5.6
8.0		1				1 1.4
9.0		3	2	9		14 19.7
10.0		5	1		2	8 11.3
12.0		3			1	4 5.6
14.0		1				1 1.4
15.0	1	1	2			4 5.6
18.0	2	4	1			7 9.9
20.0	3					3 4.2
22.0	1					1 1.4
Column Total	9	24	9	26	3	71
(Continued)	12.7	33.8	12.7	36.6	4.2	100.0

Number of Day Fine Units Imposed by Class of Offense

Count	OFFCLASS					Row Total
	FU	MA	MB	MC	MU	
50.0	1					1
150.0	1					1
Column Total	9	24	9	26	3	71
	12.7	33.8	12.7	36.6	4.2	100.0

Number of Missing Observations: 0

STAT#N Statute Number by @OFUNITS Number of Day Fine Units Imposed
 @OFUNITS

STAT#N	Count	@OFUNITS										Row Total													
		1.0	2.0	3.0	4.0	5.0	6.0	7.0	8.0	9.0	10.0		12.0												
21a-267(a)	1									1			1	1.4											
21a-277(a)	2													1	1.4										
21a-279(a)	3													8	11.3										
21a-279(c)	4										2	1		3	4.2										
53a-116	5				1									1	1.4										
53a-117	6							1						1	1.4										
53a-119b	7											2		3	4.2										
53a-125	8					1				1		1		4	5.6										
53a-125a	9													2	2.8										
53a-125b	10	1	3	2	4	5		2		8				25	35.2										
53a-140	11	1												1	1.4										
53a-157	12				1									1	1.4										
53a-167a	13								1		3			7	9.9										
53a-173	14	2		1						1	1			5	7.0										
53a-181	15							1		2	1			5	7.0										
53a-61	16										1			1	1.4										
53a-62	17									1				2	2.8										
(Continued) Total	Column Total	4	3	3	6	5	1	4	1	14	8	4	71	5.6	4.2	4.2	8.5	7.0	1.4	5.6	1.4	19.7	11.3	5.6	100.0

STAT#N	Count	@OFUNITS						Row Total	
		14.0	15.0	18.0	20.0	22.0	50.0		150.0
1								1	
21a-267(a)								1.4	
2							1	1	
21a-277(a)								1.4	
3		1	2	3	1	1		8	
21a-279(a)								11.3	
4								3	
21a-279(c)								4.2	
5								1	
53a-116								1.4	
6								1	
53a-117								1.4	
7			1					3	
53a-119b								4.2	
8	1							4	
53a-125								5.6	
9		2						2	
53a-125a								2.8	
10								25	
53a-125b								35.2	
11								1	
53a-140								1.4	
12								1	
53a-157								1.4	
13		1	2					7	
53a-167a								9.9	
14								5	
53a-173								7.0	
15			1					5	
53a-181								7.0	
16								1	
53a-61								1.4	
17			1					2	
53a-62								2.8	
Column Total		1	4	7	3	1	1	1	71
		1.4	5.6	9.9	4.2	1.4	1.4	1.4	100.0

Number of Missing Observations: 0

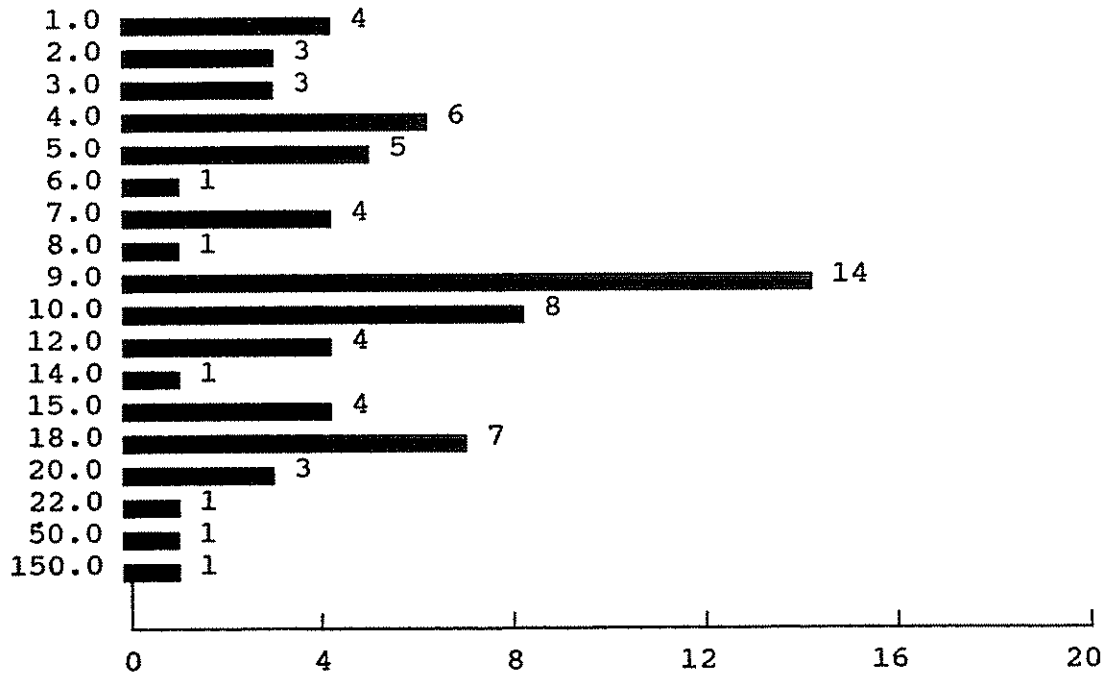
DAY FINE UNITS IMPOSED AND UNIT VALUES

Number of Day Fine Units Imposed

Value Label	Value	Frequency	Percent	Valid Percent	Cum Percent
	1.0	4	5.6	5.6	5.6
	2.0	3	4.2	4.2	9.9
	3.0	3	4.2	4.2	14.1
	4.0	6	8.5	8.5	22.5
	5.0	5	7.0	7.0	29.6
	6.0	1	1.4	1.4	31.0
	7.0	4	5.6	5.6	36.6
	8.0	1	1.4	1.4	38.0
	9.0	14	19.7	19.7	57.7
	10.0	8	11.3	11.3	69.0
	12.0	4	5.6	5.6	74.6
	14.0	1	1.4	1.4	76.1
	15.0	4	5.6	5.6	81.7
	18.0	7	9.9	9.9	91.5
	20.0	3	4.2	4.2	95.8
	22.0	1	1.4	1.4	97.2
	50.0	1	1.4	1.4	98.6
	150.0	1	1.4	1.4	100.0
Total		71	100.0	100.0	

Mean = 11.92 Minimum = 1.00 Maximum = 150.00

Number of Day Fine Units Imposed



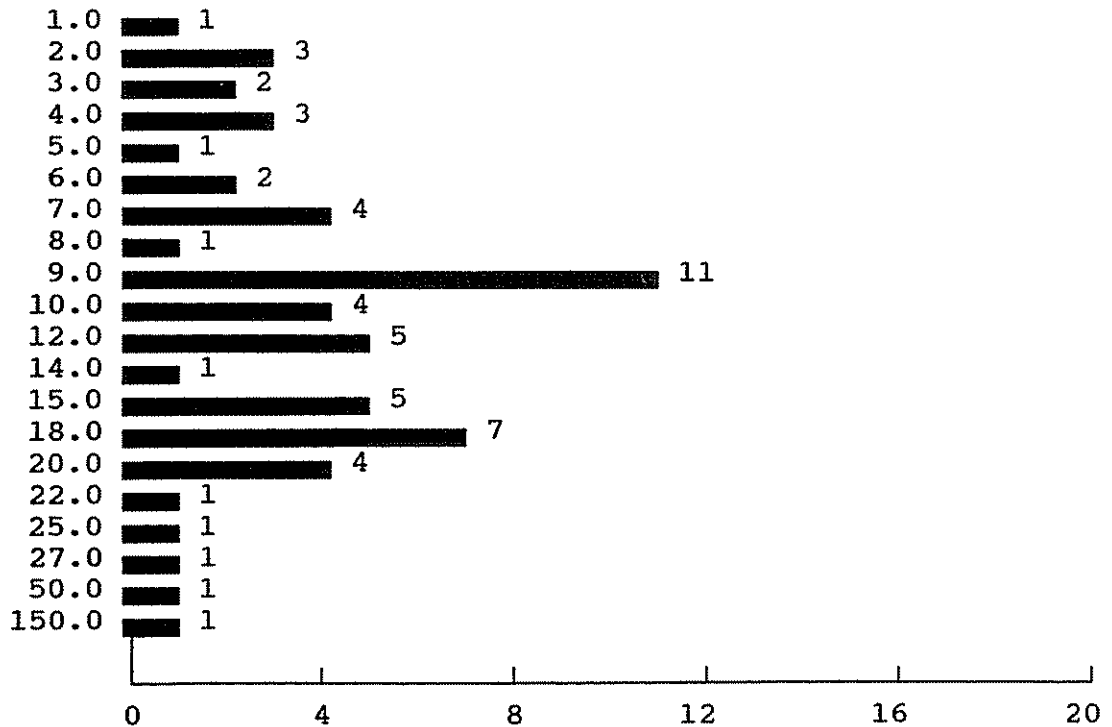
Valid cases 71 Missing cases 0

**Number of Day Fine Units Imposed
By Person**

Value Label	Value	Frequency	Percent	Valid Percent	Cum Percent
	1.0	1	1.7	1.7	1.7
	2.0	3	5.1	5.1	6.8
	3.0	2	3.4	3.4	10.2
	4.0	3	5.1	5.1	15.3
	5.0	1	1.7	1.7	16.9
	6.0	2	3.4	3.4	20.3
	7.0	4	6.8	6.8	27.1
	8.0	1	1.7	1.7	28.8
	9.0	11	18.6	18.6	47.5
	10.0	4	6.8	6.8	54.2
	12.0	5	8.5	8.5	62.7
	14.0	1	1.7	1.7	64.4
	15.0	5	8.5	8.5	72.9
	18.0	7	11.9	11.9	84.7
	20.0	4	6.8	6.8	91.5
	22.0	1	1.7	1.7	93.2
	25.0	1	1.7	1.7	94.9
	27.0	1	1.7	1.7	96.6
	50.0	1	1.7	1.7	98.3
	150.0	1	1.7	1.7	100.0
	Total	59	100.0	100.0	

Mean = 14.34 Minimum = 1.00 Maximum = 150.00

**Number of Day Fine Units Imposed
By Person**



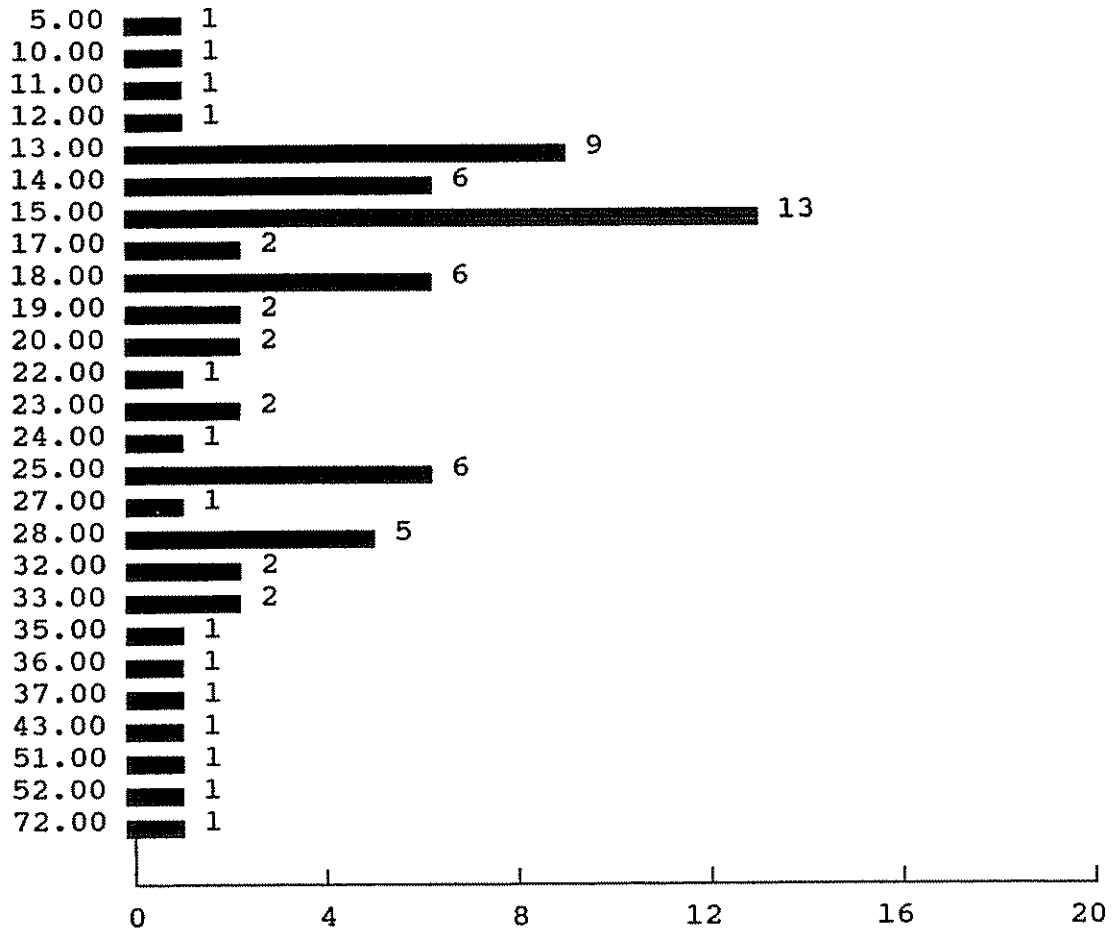
Valid cases 59 Missing cases 0

Day Fine Unit Value
In Dollars

Value Label	Value	Frequency	Percent	Valid Percent	Cum Percent
	5.00	1	1.4	1.4	1.4
	10.00	1	1.4	1.4	2.8
	11.00	1	1.4	1.4	4.2
	12.00	1	1.4	1.4	5.6
	13.00	9	12.7	12.7	18.3
	14.00	6	8.5	8.5	26.8
	15.00	13	18.3	18.3	45.1
	17.00	2	2.8	2.8	47.9
	18.00	6	8.5	8.5	56.3
	19.00	2	2.8	2.8	59.2
	20.00	2	2.8	2.8	62.0
	22.00	1	1.4	1.4	63.4
	23.00	2	2.8	2.8	66.2
	24.00	1	1.4	1.4	67.6
	25.00	6	8.5	8.5	76.1
	27.00	1	1.4	1.4	77.5
	28.00	5	7.0	7.0	84.5
	32.00	2	2.8	2.8	87.3
	33.00	2	2.8	2.8	90.1
	35.00	1	1.4	1.4	91.5
	36.00	1	1.4	1.4	93.0
	37.00	1	1.4	1.4	94.4
	43.00	1	1.4	1.4	95.8
	51.00	1	1.4	1.4	97.2
	52.00	1	1.4	1.4	98.6
	72.00	1	1.4	1.4	100.0
		-----	-----	-----	
	Total	71	100.0	100.0	

Mean = 21.39 Minimum = 5.00 Maximum = 72.00

Day Fine Unit Value
In Dollars



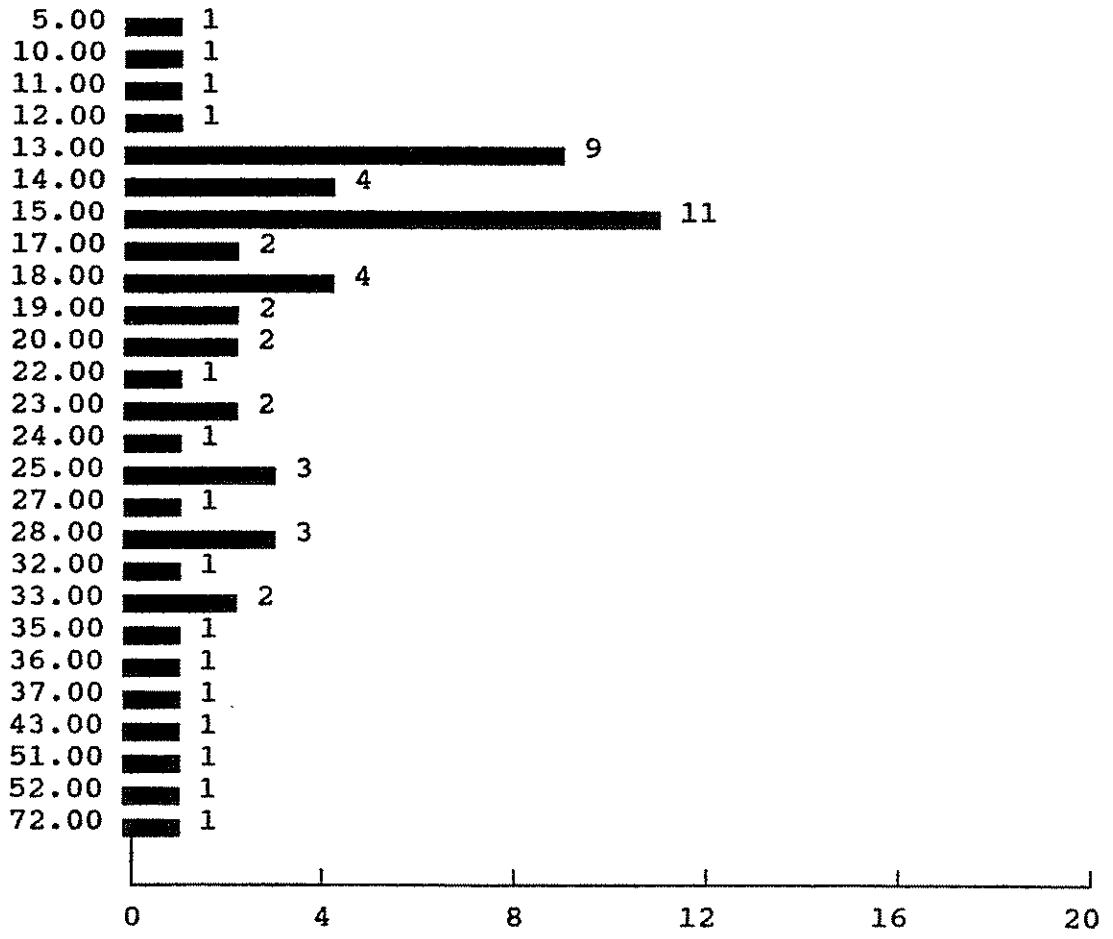
Valid cases 71 Missing cases 0

Day Fine Unit Value
In Dollars / By Person

Value Label	Value	Frequency	Percent	Valid Percent	Cum Percent
	5.00	1	1.7	1.7	1.7
	10.00	1	1.7	1.7	3.4
	11.00	1	1.7	1.7	5.1
	12.00	1	1.7	1.7	6.8
	13.00	9	15.3	15.3	22.0
	14.00	4	6.8	6.8	28.8
	15.00	11	18.6	18.6	47.5
	17.00	2	3.4	3.4	50.8
	18.00	4	6.8	6.8	57.6
	19.00	2	3.4	3.4	61.0
	20.00	2	3.4	3.4	64.4
	22.00	1	1.7	1.7	66.1
	23.00	2	3.4	3.4	69.5
	24.00	1	1.7	1.7	71.2
	25.00	3	5.1	5.1	76.3
	27.00	1	1.7	1.7	78.0
	28.00	3	5.1	5.1	83.1
	32.00	1	1.7	1.7	84.7
	33.00	2	3.4	3.4	88.1
	35.00	1	1.7	1.7	89.8
	36.00	1	1.7	1.7	91.5
	37.00	1	1.7	1.7	93.2
	43.00	1	1.7	1.7	94.9
	51.00	1	1.7	1.7	96.6
	52.00	1	1.7	1.7	98.3
	72.00	1	1.7	1.7	100.0
	Total	59	100.0	100.0	

Mean = 21.39 Minimum = 5.00 Maximum = 72.00

Day Fine Unit Value
In Dollars / By Person



Valid cases 59 Missing cases 0

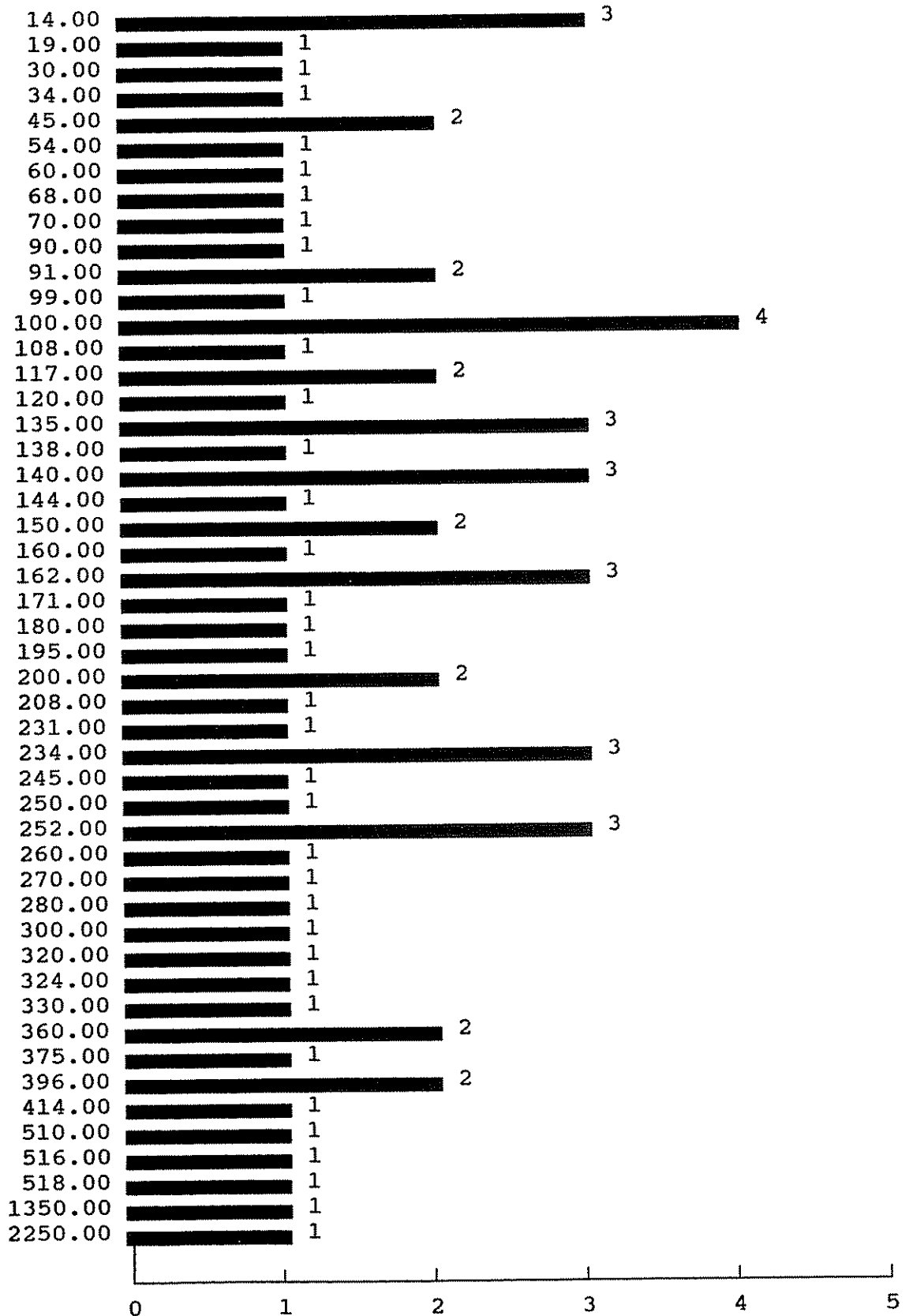
DAY FINE AND COST AMOUNTS IMPOSED

Value of Computed Fine Amounts
In Dollars

Value Label	Value	Frequency	Percent	Valid Percent	Cum Percent
	14.00	3	4.2	4.2	4.2
	19.00	1	1.4	1.4	5.6
	30.00	1	1.4	1.4	7.0
	34.00	1	1.4	1.4	8.5
	45.00	2	2.8	2.8	11.3
	54.00	1	1.4	1.4	12.7
	60.00	1	1.4	1.4	14.1
	68.00	1	1.4	1.4	15.5
	70.00	1	1.4	1.4	16.9
	90.00	1	1.4	1.4	18.3
	91.00	2	2.8	2.8	21.1
	99.00	1	1.4	1.4	22.5
	100.00	4	5.6	5.6	28.2
	108.00	1	1.4	1.4	29.6
	117.00	2	2.8	2.8	32.4
	120.00	1	1.4	1.4	33.8
	135.00	3	4.2	4.2	38.0
	138.00	1	1.4	1.4	39.4
	140.00	3	4.2	4.2	43.7
	144.00	1	1.4	1.4	45.1
	150.00	2	2.8	2.8	47.9
	160.00	1	1.4	1.4	49.3
	162.00	3	4.2	4.2	53.5
	171.00	1	1.4	1.4	54.9
	180.00	1	1.4	1.4	56.3
	195.00	1	1.4	1.4	57.7
	200.00	2	2.8	2.8	60.6
	208.00	1	1.4	1.4	62.0
	231.00	1	1.4	1.4	63.4
	234.00	3	4.2	4.2	67.6
	245.00	1	1.4	1.4	69.0
	250.00	1	1.4	1.4	70.4
	252.00	3	4.2	4.2	74.6
	260.00	1	1.4	1.4	76.1
	270.00	1	1.4	1.4	77.5
	280.00	1	1.4	1.4	78.9
	300.00	1	1.4	1.4	80.3
	320.00	1	1.4	1.4	81.7
	324.00	1	1.4	1.4	83.1
	330.00	1	1.4	1.4	84.5
	360.00	2	2.8	2.8	87.3
	375.00	1	1.4	1.4	88.7
	396.00	2	2.8	2.8	91.5
	414.00	1	1.4	1.4	93.0
	510.00	1	1.4	1.4	94.4
	516.00	1	1.4	1.4	95.8
	518.00	1	1.4	1.4	97.2
	1350.00	1	1.4	1.4	98.6
	2250.00	1	1.4	1.4	100.0
	Total	71	100.0	100.0	

Mean = 234.08 Minimum = 14.00 Maximum = 2,250
Total Revenue = \$16,620

Value of Computed Fine Amounts
In Dollars



Valid cases

71

Missing cases

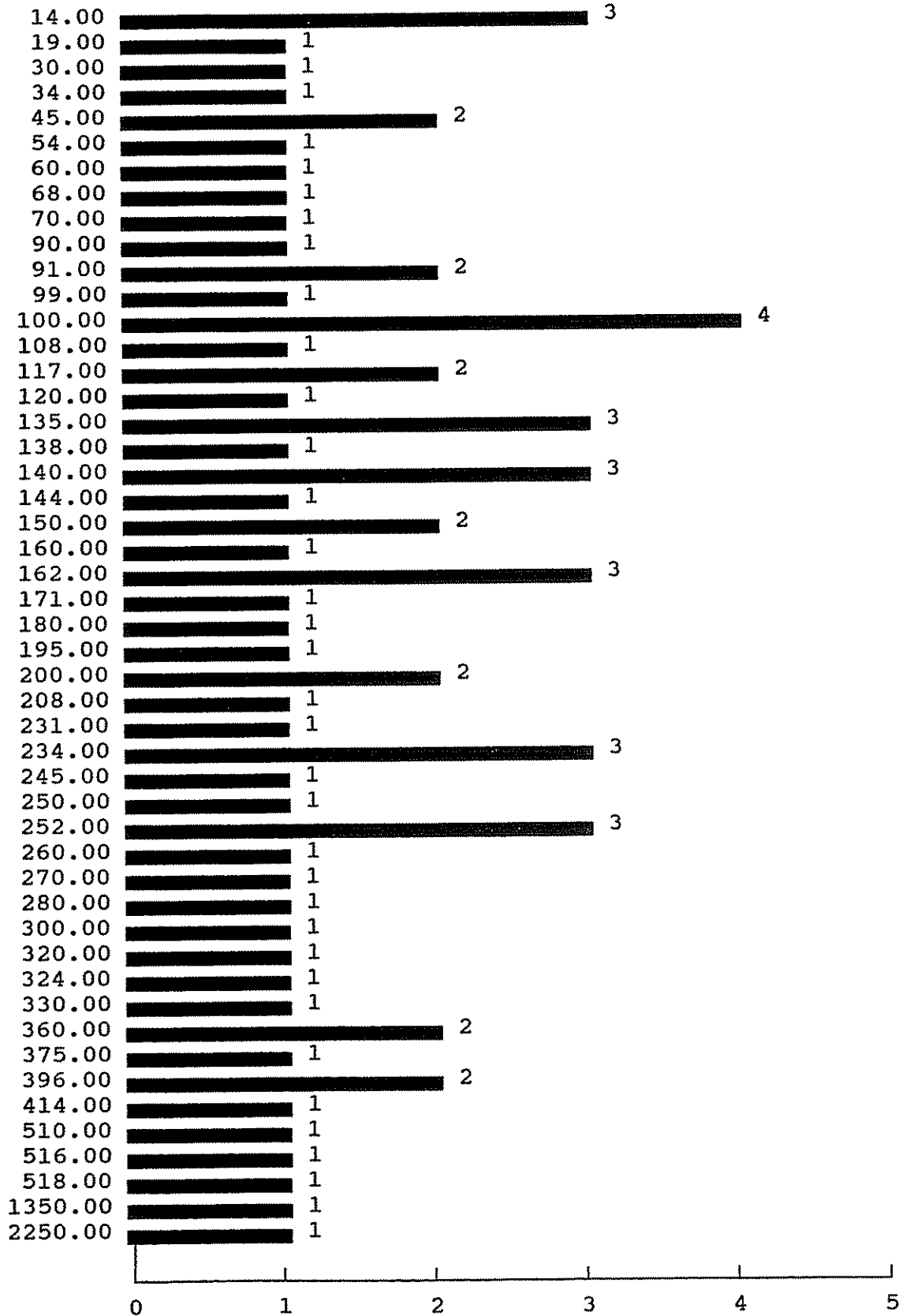
0

Value of Capped Fine Amounts
In Dollars

Value Label	Value	Frequency	Percent	Valid Percent	Cum Percent
	14.00	3	4.2	4.2	4.2
	19.00	1	1.4	1.4	5.6
	30.00	1	1.4	1.4	7.0
	34.00	1	1.4	1.4	8.5
	45.00	2	2.8	2.8	11.3
	54.00	1	1.4	1.4	12.7
	60.00	1	1.4	1.4	14.1
	68.00	1	1.4	1.4	15.5
	70.00	1	1.4	1.4	16.9
	90.00	1	1.4	1.4	18.3
	91.00	2	2.8	2.8	21.1
	99.00	1	1.4	1.4	22.5
	100.00	4	5.6	5.6	28.2
	108.00	1	1.4	1.4	29.6
	117.00	2	2.8	2.8	32.4
	120.00	1	1.4	1.4	33.8
	135.00	3	4.2	4.2	38.0
	138.00	1	1.4	1.4	39.4
	140.00	3	4.2	4.2	43.7
	144.00	1	1.4	1.4	45.1
	150.00	2	2.8	2.8	47.9
	160.00	1	1.4	1.4	49.3
	162.00	3	4.2	4.2	53.5
	171.00	1	1.4	1.4	54.9
	180.00	1	1.4	1.4	56.3
	195.00	1	1.4	1.4	57.7
	200.00	2	2.8	2.8	60.6
	208.00	1	1.4	1.4	62.0
	231.00	1	1.4	1.4	63.4
	234.00	3	4.2	4.2	67.6
	245.00	1	1.4	1.4	69.0
	250.00	1	1.4	1.4	70.4
	252.00	3	4.2	4.2	74.6
	260.00	1	1.4	1.4	76.1
	270.00	1	1.4	1.4	77.5
	280.00	1	1.4	1.4	78.9
	300.00	1	1.4	1.4	80.3
	320.00	1	1.4	1.4	81.7
	324.00	1	1.4	1.4	83.1
	330.00	1	1.4	1.4	84.5
	360.00	2	2.8	2.8	87.3
	375.00	1	1.4	1.4	88.7
	396.00	2	2.8	2.8	91.5
	414.00	1	1.4	1.4	93.0
	510.00	1	1.4	1.4	94.4
	516.00	1	1.4	1.4	95.8
	518.00	1	1.4	1.4	97.2
	1350.00	1	1.4	1.4	98.6
	2250.00	1	1.4	1.4	100.0
	Total	71	100.0	100.0	

Mean = 234.08 Minimum = 14.00 Maximum = 2,250
Total Revenue = \$16,620

Value of Capped Fine Amounts
In Dollars



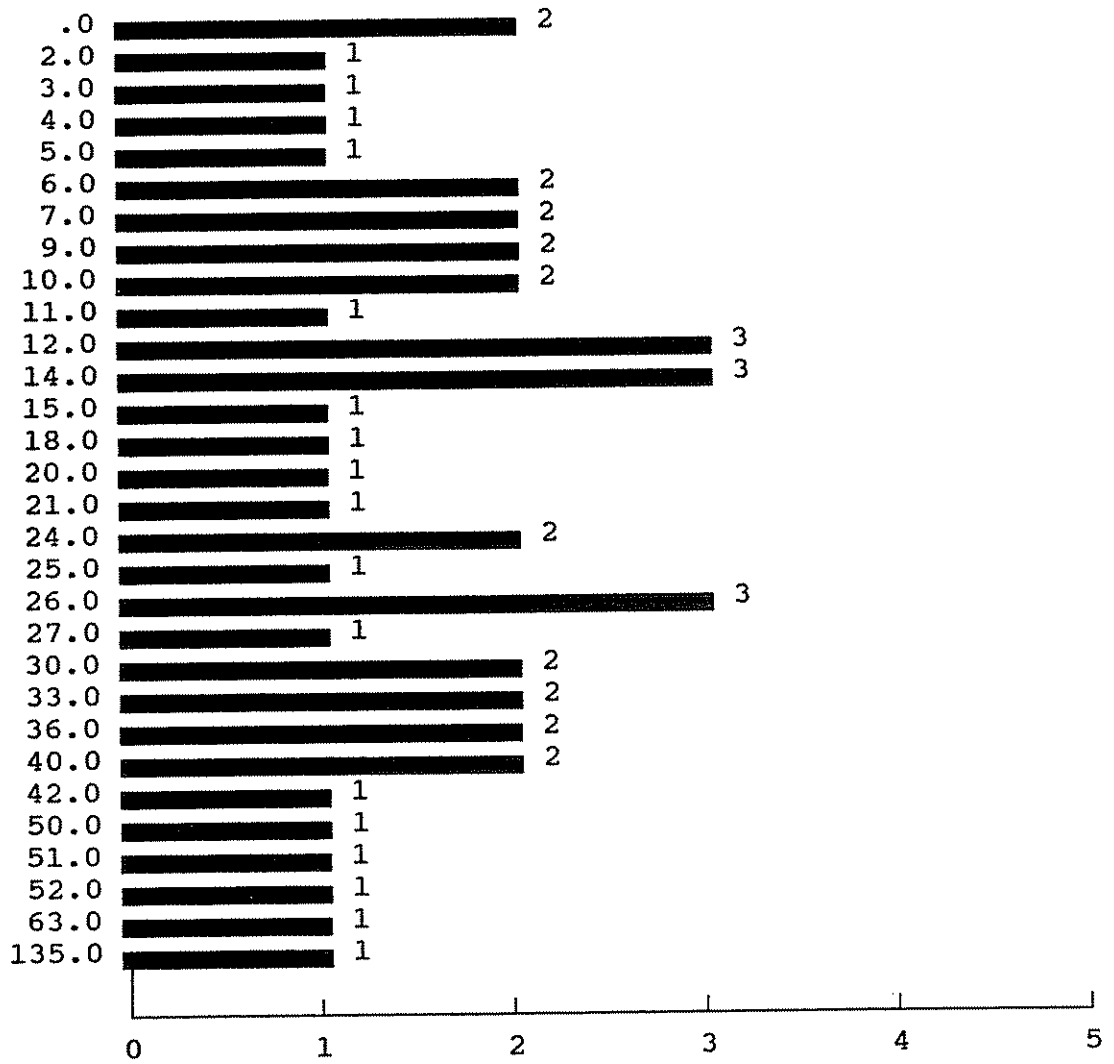
Valid cases 71 Missing cases 0

Remittance
In Dolars

Value Label	Value	Frequency	Percent	Valid Percent	Cum Percent
	.0	2	2.8	4.3	4.3
	2.0	1	1.4	2.2	6.5
	3.0	1	1.4	2.2	8.7
	4.0	1	1.4	2.2	10.9
	5.0	1	1.4	2.2	13.0
	6.0	2	2.8	4.3	17.4
	7.0	2	2.8	4.3	21.7
	9.0	2	2.8	4.3	26.1
	10.0	2	2.8	4.3	30.4
	11.0	1	1.4	2.2	32.6
	12.0	3	4.2	6.5	39.1
	14.0	3	4.2	6.5	45.7
	15.0	1	1.4	2.2	47.8
	18.0	1	1.4	2.2	50.0
	20.0	1	1.4	2.2	52.2
	21.0	1	1.4	2.2	54.3
	24.0	2	2.8	4.3	58.7
	25.0	1	1.4	2.2	60.9
	26.0	3	4.2	6.5	67.4
	27.0	1	1.4	2.2	69.6
	30.0	2	2.8	4.3	73.9
	33.0	2	2.8	4.3	78.3
	36.0	2	2.8	4.3	82.6
	40.0	2	2.8	4.3	87.0
	42.0	1	1.4	2.2	89.1
	50.0	1	1.4	2.2	91.3
	51.0	1	1.4	2.2	93.5
	52.0	1	1.4	2.2	95.7
	63.0	1	1.4	2.2	97.8
	135.0	1	1.4	2.2	100.0
	.	25	35.2	Missing	
	Total	71	100.0	100.0	

Mean = 23.70 Minimum = 0.00 Maximum = 135.00
Total Revenue = \$1,090

Remittance
In Dolars



Valid cases

46

Missing cases

25

Actual Value of Fine After Remittance
In Dollars

Value Label	Value	Frequency	Percent	Valid Percent	Cum Percent
	9.00	1	1.4	1.4	1.4
	14.00	2	2.8	2.8	4.2
	17.00	1	1.4	1.4	5.6
	27.00	1	1.4	1.4	7.0
	30.00	1	1.4	1.4	8.5
	36.00	1	1.4	1.4	9.9
	45.00	1	1.4	1.4	11.3
	48.00	1	1.4	1.4	12.7
	54.00	1	1.4	1.4	14.1
	61.00	1	1.4	1.4	15.5
	63.00	1	1.4	1.4	16.9
	70.00	1	1.4	1.4	18.3
	81.00	2	2.8	2.8	21.1
	90.00	1	1.4	1.4	22.5
	91.00	1	1.4	1.4	23.9
	97.00	1	1.4	1.4	25.4
	99.00	1	1.4	1.4	26.8
	100.00	2	2.8	2.8	29.6
	105.00	2	2.8	2.8	32.4
	108.00	1	1.4	1.4	33.8
	112.00	1	1.4	1.4	35.2
	121.00	2	2.8	2.8	38.0
	124.00	1	1.4	1.4	39.4
	129.00	1	1.4	1.4	40.8
	135.00	1	1.4	1.4	42.3
	140.00	3	4.2	4.2	46.5
	150.00	2	2.8	2.8	49.3
	160.00	1	1.4	1.4	50.7
	162.00	3	4.2	4.2	54.9
	171.00	1	1.4	1.4	56.3
	180.00	1	1.4	1.4	57.7
	187.00	2	2.8	2.8	60.6
	195.00	1	1.4	1.4	62.0
	200.00	1	1.4	1.4	63.4
	205.00	1	1.4	1.4	64.8
	210.00	2	2.8	2.8	67.6
	220.00	1	1.4	1.4	69.0
	226.00	2	2.8	2.8	71.8
	234.00	1	1.4	1.4	73.2
	243.00	1	1.4	1.4	74.6
	252.00	1	1.4	1.4	76.1
	260.00	1	1.4	1.4	77.5
	270.00	1	1.4	1.4	78.9
	280.00	1	1.4	1.4	80.3
	291.00	1	1.4	1.4	81.7
	297.00	1	1.4	1.4	83.1
	320.00	1	1.4	1.4	84.5
	324.00	2	2.8	2.8	87.3

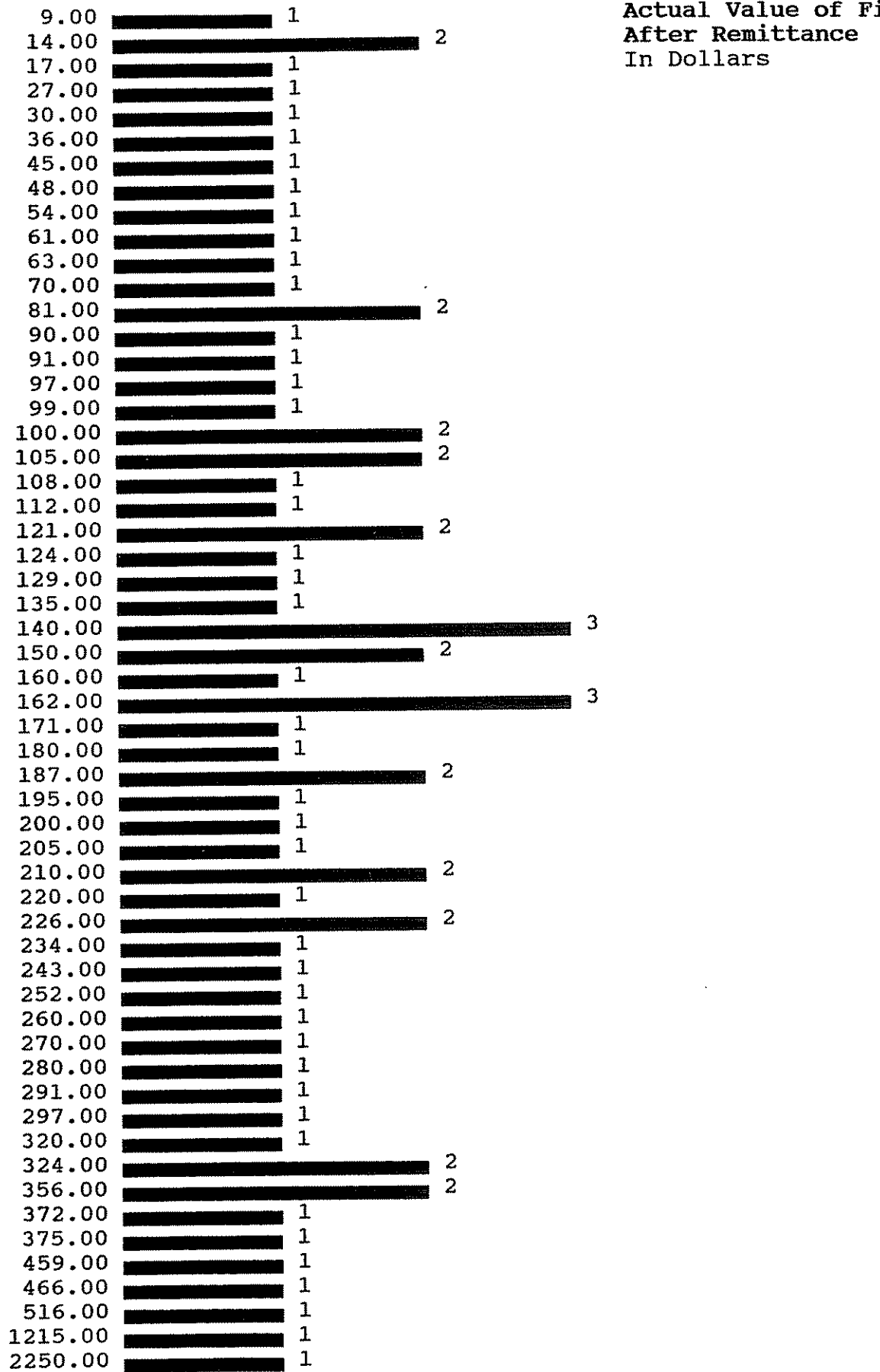
(continued)

Actual Value of Fine After Remittance
 In Dollars

356.00	2	2.8	2.8	90.1
372.00	1	1.4	1.4	91.5
375.00	1	1.4	1.4	93.0
459.00	1	1.4	1.4	94.4
466.00	1	1.4	1.4	95.8
516.00	1	1.4	1.4	97.2
1215.00	1	1.4	1.4	98.6
2250.00	1	1.4	1.4	100.0
	-----	-----	-----	
Total	71	100.0	100.0	

Mean = 218.73 Minimum = 9.00 Maximum = 2,250
 Total Revenue = \$15,530

Actual Value of Fine
After Remittance
In Dollars



Valid cases

71

Missing cases

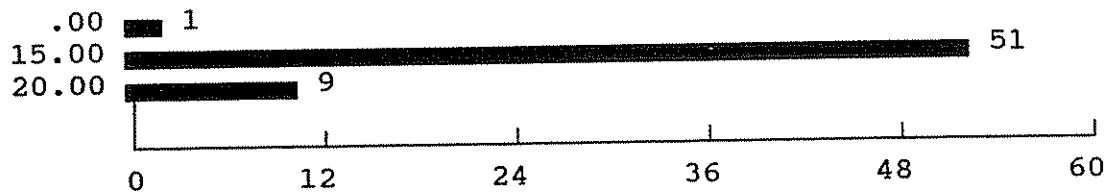
0

Court Costs
In Dollars

Value Label	Value	Frequency	Percent	Valid Percent	Cum Percent
	.00	1	1.4	1.6	1.6
	15.00	51	71.8	83.6	85.2
	20.00	9	12.7	14.8	100.0
	.	10	14.1	Missing	
	Total	71	100.0	100.0	

Mean = 15.49 Minimum = 0.00 Maximum = 20.00
Total Revenue = \$945

Court Costs
In Dollars



Valid cases 61 Missing cases 10

Calculated Fines with Caps Including Court Costs
In Dollars

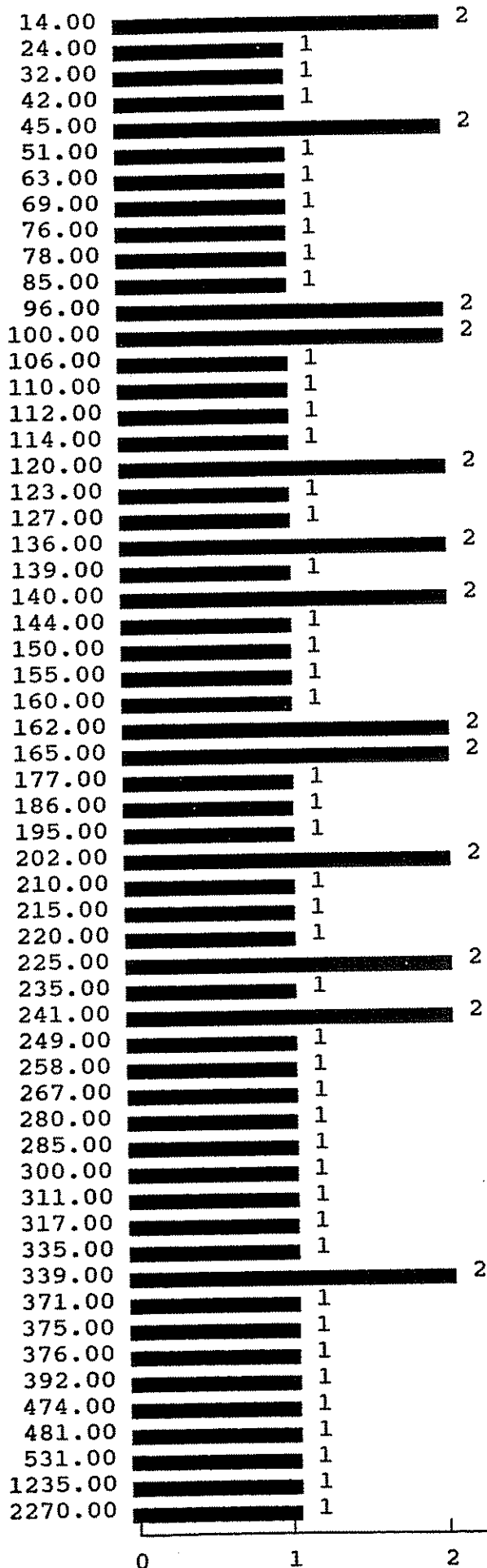
Value Label	Value	Frequency	Percent	Valid Percent	Cum Percent
	14.00	2	2.8	2.8	2.8
	24.00	1	1.4	1.4	4.2
	32.00	1	1.4	1.4	5.6
	42.00	1	1.4	1.4	7.0
	45.00	2	2.8	2.8	9.9
	51.00	1	1.4	1.4	11.3
	63.00	1	1.4	1.4	12.7
	69.00	1	1.4	1.4	14.1
	76.00	1	1.4	1.4	15.5
	78.00	1	1.4	1.4	16.9
	85.00	1	1.4	1.4	18.3
	96.00	2	2.8	2.8	21.1
	100.00	2	2.8	2.8	23.9
	106.00	1	1.4	1.4	25.4
	110.00	1	1.4	1.4	26.8
	112.00	1	1.4	1.4	28.2
	114.00	1	1.4	1.4	29.6
	120.00	2	2.8	2.8	32.4
	123.00	1	1.4	1.4	33.8
	127.00	1	1.4	1.4	35.2
	136.00	2	2.8	2.8	38.0
	139.00	1	1.4	1.4	39.4
	140.00	2	2.8	2.8	42.3
	144.00	1	1.4	1.4	43.7
	150.00	1	1.4	1.4	45.1
	155.00	1	1.4	1.4	46.5
	160.00	1	1.4	1.4	47.9
	162.00	2	2.8	2.8	50.7
	165.00	2	2.8	2.8	53.5
	177.00	1	1.4	1.4	54.9
	186.00	1	1.4	1.4	56.3
	195.00	1	1.4	1.4	57.7
	202.00	2	2.8	2.8	60.6
	210.00	1	1.4	1.4	62.0
	215.00	1	1.4	1.4	63.4
	220.00	1	1.4	1.4	64.8
	225.00	2	2.8	2.8	67.6
	235.00	1	1.4	1.4	69.0
	241.00	2	2.8	2.8	71.8
	249.00	1	1.4	1.4	73.2
	258.00	1	1.4	1.4	74.6
	267.00	1	1.4	1.4	76.1
	280.00	1	1.4	1.4	77.5
	285.00	1	1.4	1.4	78.9
	300.00	1	1.4	1.4	80.3
	311.00	1	1.4	1.4	81.7
	317.00	1	1.4	1.4	83.1

Calculated Fines with Caps Including Court Costs
 In Dollars

335.00	1	1.4	1.4	84.5
339.00	2	2.8	2.8	87.3
371.00	1	1.4	1.4	88.7
375.00	1	1.4	1.4	90.1
376.00	1	1.4	1.4	91.5
392.00	1	1.4	1.4	93.0
474.00	1	1.4	1.4	94.4
481.00	1	1.4	1.4	95.8
531.00	1	1.4	1.4	97.2
1235.00	1	1.4	1.4	98.6
2270.00	1	1.4	1.4	100.0
	-----	-----	-----	
Total	71	100.0	100.0	

Mean = 232.04 Minimum = 14.00 Maximum = 2,270
 Total Revenue = \$16,475

Calculated Fines with Caps
Including Court Costs
In Dollars



Valid cases 71
Missing cases 0

Calculated Fines with Caps Including Court Costs

In Dollars / By Person

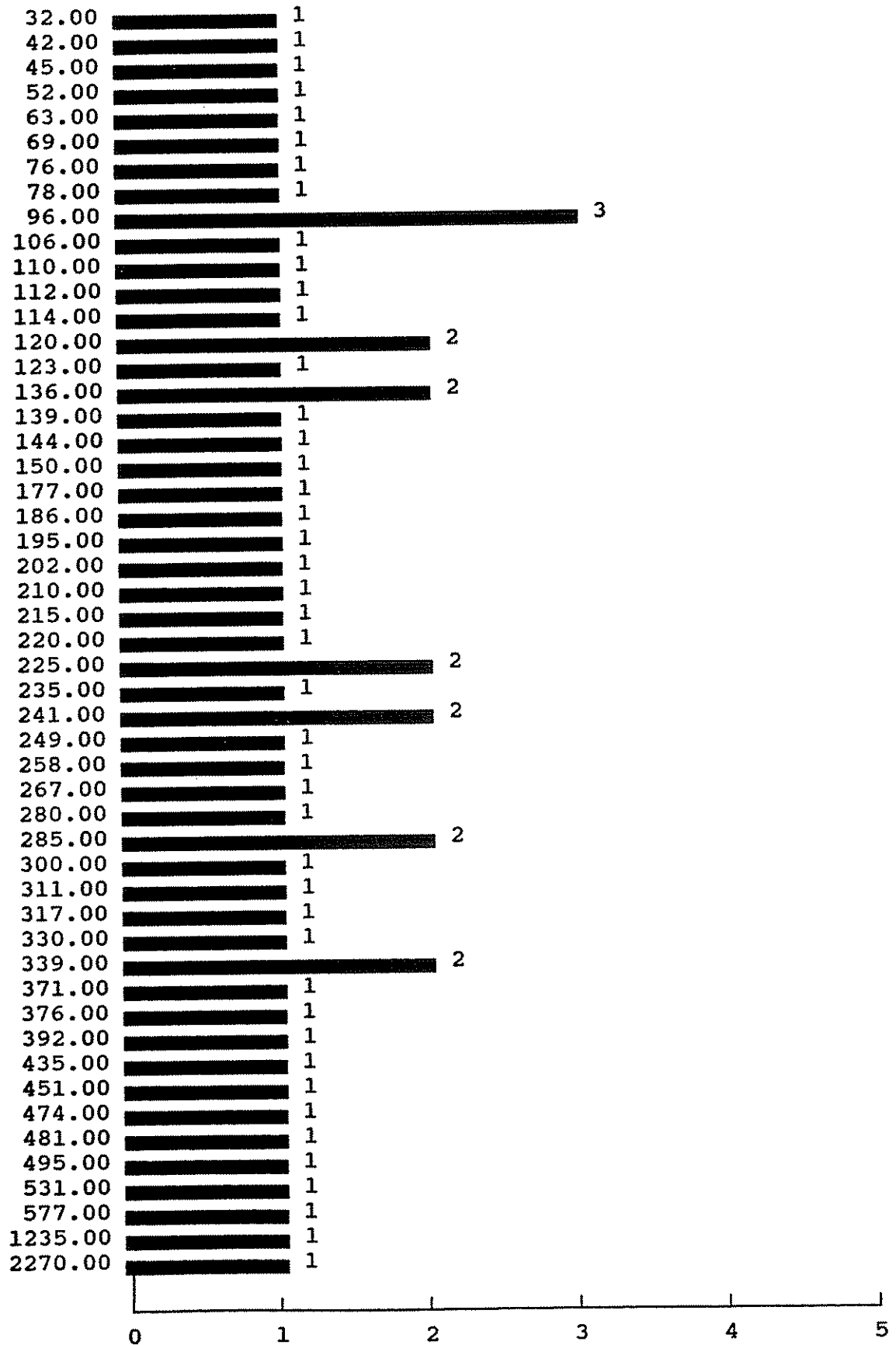
Value Label	Value	Frequency	Percent	Valid Percent	Cum Percent
	32.00	1	1.7	1.7	1.7
	42.00	1	1.7	1.7	3.4
	45.00	1	1.7	1.7	5.1
	52.00	1	1.7	1.7	6.8
	63.00	1	1.7	1.7	8.5
	69.00	1	1.7	1.7	10.2
	76.00	1	1.7	1.7	11.9
	78.00	1	1.7	1.7	13.6
	96.00	3	5.1	5.1	18.6
	106.00	1	1.7	1.7	20.3
	110.00	1	1.7	1.7	22.0
	112.00	1	1.7	1.7	23.7
	114.00	1	1.7	1.7	25.4
	120.00	2	3.4	3.4	28.8
	123.00	1	1.7	1.7	30.5
	136.00	2	3.4	3.4	33.9
	139.00	1	1.7	1.7	35.6
	144.00	1	1.7	1.7	37.3
	150.00	1	1.7	1.7	39.0
	177.00	1	1.7	1.7	40.7
	186.00	1	1.7	1.7	42.4
	195.00	1	1.7	1.7	44.1
	202.00	1	1.7	1.7	45.8
	210.00	1	1.7	1.7	47.5
	215.00	1	1.7	1.7	49.2
	220.00	1	1.7	1.7	50.8
	225.00	2	3.4	3.4	54.2
	235.00	1	1.7	1.7	55.9
	241.00	2	3.4	3.4	59.3
	249.00	1	1.7	1.7	61.0
	258.00	1	1.7	1.7	62.7
	267.00	1	1.7	1.7	64.4
	280.00	1	1.7	1.7	66.1
	285.00	2	3.4	3.4	69.5
	300.00	1	1.7	1.7	71.2
	311.00	1	1.7	1.7	72.9
	317.00	1	1.7	1.7	74.6
	330.00	1	1.7	1.7	76.3
	339.00	2	3.4	3.4	79.7
	371.00	1	1.7	1.7	81.4
	376.00	1	1.7	1.7	83.1
	392.00	1	1.7	1.7	84.7
	435.00	1	1.7	1.7	86.4
	451.00	1	1.7	1.7	88.1
	474.00	1	1.7	1.7	89.8
	481.00	1	1.7	1.7	91.5
	495.00	1	1.7	1.7	93.2
	531.00	1	1.7	1.7	94.9
	577.00	1	1.7	1.7	96.6
	1235.00	1	1.7	1.7	98.3
	2270.00	1	1.7	1.7	100.0

Total 59 100.0 100.0

Mean = 279.24 Minimum = 32.00 Maximum = 2,270.00

Total Revenue = \$16,475

Calculated Fines with Caps Including Court Costs
In Dollars / By Person



Valid cases 59 Missing cases 0

FINANCIAL ASSESSMENT TO BE IMPOSED

Comparison of first 71 Day Fine cases with pre-project fine amounts

Statute#	Class	Charge Desc	Old Number Fined	New Number Fined	Old Max Fine	New Max Fine	Old Min Fine	New Min Fine	Old Ave Fine	New Ave Fine	Old Median Fine	New Median Fine
21-43	V	PAWNBROKER REPT	1		\$50		\$50		\$50		\$50	
21a-267(a)	MC	DRUG PARAPHERNLA	4	1	\$250	\$99	\$100	\$99	\$163	\$99	\$150	\$99
21a-277(a)	FU	SALE HLCGN/NARC	8	1	\$2,500	\$2,250	\$500	\$2,250	\$1,313	\$2,250	\$1,250	\$2,250
21a-277(b)	FU	SALE CNTLD SBST	1		\$900		\$900		\$900		\$900	
21a-278(a)	FU	SALE ILLGL DRUG	2		\$2,000		\$2,000		\$2,000		\$2,000	
21a-279(a)	FU	POSS NARCOTICS	17	8	\$5,000	\$1,215	\$250	\$90	\$812	\$395	\$500	\$294
21a-279(b)	FU	POSS HALL/MRJNA	2		\$300		\$250		\$275		\$275	
21a-279(c)	MU	POSS DRUG/MRHNA	7	3	\$350	\$459	\$100	\$270	\$229	\$351	\$250	\$324
22-364	I	ROAMING DOG	1		\$50		\$50		\$50		\$50	
22a-250(a)	V	LITTERING	1		\$85		\$85		\$85		\$85	
26-112	MU	SPORT FISH REGS	2		\$50		\$35		\$43		\$43	
26-118	MU	FISH IN RSRVOIR	2		\$100		\$100		\$100		\$100	
29-35(a)	FU	NO PISTOL PRMIT	1		\$90		\$90		\$90		\$90	
30-77	UM	IL LIQ DISPOSAL	1		\$350		\$350		\$350		\$350	
30-89(b)	V	MNR POSS LIQUOR	1		\$225		\$225		\$225		\$225	
51-164r	MC	FLR-PAY/PLEAD	1		\$50		\$50		\$50		\$50	
53-203	MU	IL FIRE ARM	1		\$100		\$100		\$100		\$100	
53-21	FU	RISK OF INJURY	2		\$250		\$200		\$225		\$225	
53-278(c)(d)	MA	GAMBLING DEVICE	2		\$350		\$250		\$300		\$300	
53a-103	FD	BURGLARY 3	1		\$50		\$50		\$50		\$50	
53a-107	MA	CRIM TRESPASS 1	1		\$90		\$90		\$90		\$90	
53a-108	MB	CRIM TRESPASS 2										
53a-109	MC	CRIM TRESPASS 3	3		\$200		\$90		\$127		\$90	
53a-116	MA	CRIM MISCHIEF 2		1		187		187		187		187
53a-117	MB	CRIM MISCHIEF 3	1	1	\$100	\$220	\$100	\$220	\$100	\$220	\$100	\$220
53a-119b	MA	USE MV WO PERM		3		\$356		\$162		\$251		\$234
53a-124	FD	LARCENY 3										
53a-125	MA	LARCENY 4	2	4	\$250	\$516	\$100	\$124	\$175	\$317	\$175	\$314
53a-125a	MB	LARCENY 5	1	2	\$250	\$375	\$250	\$324	\$250	\$350	\$250	\$350
53a-125b	MC	LARCENY 6	36	25	\$500	\$252	\$25	\$17	\$147	\$109	\$100	\$105
53a-128	MA	ISSUE BAD CHECK	3		\$150		\$50		\$100		\$100	
53a-130	MB	CRIM IMPERSONTN	2		\$100		\$100		\$100		\$100	
53a-140	MB	FORGERY 3		1		\$14		\$14		\$14		\$14
53a-157	MA	FALSE STATEMENT		1		54		54		54		54
53a-167a	MA	INTRFERE/RESIST	26	7	\$500	\$320	\$35	\$108	\$135	\$202	\$95	\$195
53a-172	FD	FLR TO APPEAR 1	1		\$250		\$250		\$250		\$250	
53a-173	MA	FLR TO APPEAR 2	16	5	\$200	\$150	\$50	\$9	\$116	\$64	\$100	\$36
53a-180	MA	FILE FLS REPORT	1		\$100		\$100		\$100		\$100	
53a-181	MB	BREACH OF PEACE	18	5	\$250	\$226	\$35	\$81	\$94	\$168	\$75	\$200
53a-181a	I	PUBLIC DISTRBNCE	1		\$90		\$90		\$90		\$90	
53a-182	MC	DISORDERLY COND	21		\$200		\$35		\$67		\$50	
53a-182a	MC	OBS FREE PASSAGE	1		\$50		\$50		\$50		\$50	
53a-185	MC	LOITER SCHOOL	1		\$50		\$50		\$50		\$50	
53a-32	FD	PROBATION VIOL										
53a-60	FD	ASSAULT 2	2		\$1,000		\$75		\$538		\$538	
53a-61	MA	ASSAULT 3	5	1	\$250	\$180	\$50	\$180	\$138	\$180	\$150	\$180
53a-62	MA	THREATENING	8	2	\$500	\$210	\$50	\$97	\$185	\$154	\$90	\$154
53a-82	MA	PROSTITUTION										
7-148**	V	TOWN ORD-VIOL	1		\$100		\$100		\$100		\$100	
Total Cases			209	71	\$5,000	\$2,250	\$25	\$9	\$257	\$219	\$100	\$160

MONITORING DATA KEY

Bridgeport Day Fine Project

Variable	D?	Variable Description	Codes	Code Description
Docket#	Y	Unique docket #s	A/N	Docket #s
Count	Y	Numeric identifier of multiple counts for same file	1 2 3	same
Revda	S	Revision date	Date	same
Rev#	S	Revision number	1 2 3 4	Payment schedule Fine modification Reinstatement Other
Lname	Y	last name	A	same
Fname	Y	first name	A	same
Mname	Y	middle initial	A	same
Statute#	Y	CT statute # for conviction charge	A/N	same
Chgdesc	Y	Description of conviction charge	A	same
Offclass	Y	Offense class of conviction charge	FD FU MA MB MC MU	D Felony Undetermined Felony A Misdemeanor B Misdemeanor C Misdemeanor Undetermined Misd.
Offdesc	Y	Description of offense class	MISDEMEANOR CLASS A, etc	same
Senda	Y	Sentence date	Dates	same
Judge	N	Presiding judge	A	same
Attorneyname	S	Attorney name or type if name unknown	A PD	Actual Name Public Defender
Asstamt	Y	Assessed fine amount	\$	Newactvalue + Costs
#ofunits	Y	Number of day fine units imposed	N	same
Unitvalue	Y	Dollar value of one day fine unit	\$	same
Totvalue	Y	Total value of fine imposed	\$	#ofunits x unitvalue
Statmax	Y	Statutory maximum for offense	\$	same

Y = data complete, N = no data entered, S = some values entered in database
Same = value description is same as variable description
A/N = alphanumeric, A = letters/words, N = numbers, \$ = Dollar amount

Variable	D?	Variable Description	Codes	Code Description
Statmin	N	Statutory minimum for offense	\$	same
Actvalue	Y	Actual value of fine	\$	Adjusts fine for statutory maxima
Remit	S	Remittance	\$	10% reduction if Δ pays in full
Newactvalue	Y	New fine amount	\$	Includes remittance
Costs	Y	Court costs to be paid by Δ	\$	same
Daysal	N			
Adsen	N			
Dfunit	N			
Dfval	N			
Dfamt	N			
Numinst	Y	Number of installments	N	# of installments for payment of fine
Instper	Y	Length of total payment period	N	same
Instamt	Y	Dollar value of each installment payment	\$	same
Ninstda	S	Next date installment is due	Date	same
Ldueda	Y	Most recent prior due date for installment payment	Date	same
Ninstamt	S	Next installment payment amount due	\$	same
Totpaid	Y	Total paid to date of fine	\$	same
Totpment	S			
Lpayday	S	Last date payment is allowed	Date	same
Lpayamt	S	Amount of last installment. amount?	\$	
Arrears	S	Amount of fine in arrears	\$	same

Y = data complete, N = no data entered, S = some values entered in database
Same = value description is same as variable description
A/N = alphanumeric, A = letters/words, N = numbers, \$ = Dollar amount

Variable	D?	Variable Description	Codes	Code Description
Laction	S	Last enforcement action	N	
Actda	S	Action date	Date	
Actnum	S	Action number	N	
Actdes	N	Action description	A	
Senty	S	Sentence type	N	
Instnum	Y	Installment number	N	same
Prevda	N			
Comments	S	"Freeform" comments about enforcement		
Revrea	S	Reason for revisions	1 2 3 4 5 6	Delinquent payment Willful default Standard procedure Hardship Voluntary appearance Other
Revdes	S	Description	A	
Post	S		A	
Revtype	S		N	
Rpostda	S		Date	
Spouse	S	Does $\hat{\Delta}$ have a spouse	Y N	Yes No
Spouseemp	S	Is spouse employed?	Y N	Yes No
Spouseinc	S	Spouse's income	\$	
Jobst	N			
Emptime	S	Length of time employed	N	
Job	Y	Employment type	01 02 03 04 05 06 07 08 09 10 11	Full time Part time Unemployed Disabled Retired Seasonal Student Homemaker Military Off the books Other

Y = data complete, N = no data entered, S = some values entered in database
Same = value description is same as variable description
A/N = alphanumeric, A = letters/words, N = numbers, \$ = Dollar amount

Variable	D?	Variable Description	Codes	Code Description
Numdep	S	Number of dependents	N	same
Gardian	Y	Source of income other than from employment	01 02 03 04 05 06 07 08 09 10 11 12	Spouse Parents Savings Social Services Pension Workers Comp City Assistance State Assistance Federal Assistance Other Multiple sources Unemployment comp.
Netinc	S	Net income	N	
Pprd	S	Period for net income	N	same
Prevgrossinc	S	Previous gross income	\$	same
Prevpprd	S	Pay period for above	N	same
Previousemp	S	Name of previous employer	A	same
Prevemptime	S	Length of previous employment	N	
Unemptime	S	Length of time unemployed	N	In months
Previnc	S	Previous income - other than employment	\$	
Foodstamps	S	Income from foodstamps	\$	
Bussiness	N	Income from business	\$	
Rentalinc	N	Income from rental properties?	\$	
Funds	N			
Hsval	N	House value	\$	same
carval	N	Car value	\$	same
Cash	N	Cash possessed by Δ	\$	same
Othasst	N	Other assets	\$	same
Totasst	N	Total assets	\$	same
Daycare	S	Childcare expenses	\$	

Y = data complete, N = no data entered, S = some values entered in database
Same = value description is same as variable description
A/N = alphanumeric, A = letters/words, N = numbers, \$ = Dollar amount

Variable	D?	Variable Description	Codes	Code Description
Hlthexp	S	Health expenses	\$	
Othexp	S	Other expenses	\$	
Totexp	S	Total expenses	\$	same
Netdailyinc	Y	Net daily income	\$	taking all variables into account
Lrevtype	N			
Lrevrea	N			
Lrevdes	N			
Closeda	S	Date of case closing	Date	
Closety	S	Type of closing	1 2 3 4 5	Full payment Rearrested Sentence modification Absconded Other
Sent2	S			
Title	N			
Senoff	N			
Pmons	N			
Spterm	N			
Dob	Y	Date of birth	Date	same
Sex	Y	Sex	F M	Female Male
Eth	Y	Ethnicity	1 2 3 4 5	African American White Hispanic Asian Other
Address1	S	Primary address	A/N	same
Address2	S	Other adress	A/N	same
Apt	S	Apartment number	A/N	same
City	S	City of residence	A	same
State	S	State of residence	A	same
Zipcode	S	Δ's zipcode	N	same
Areacode	S	Δ's area code	N	same

Y = data complete, N = no data entered, S = some values entered in database
Same = value description is same as variable description
A/N = alphanumeric, A = letters/words, N = numbers, \$ = Dollar amount

Variable	D?	Variable Description	Codes	Code Description
Telephone	S	Δ's telephone number	N	same
Emp	S	Employer's name	A	same
Empadd	N	Employer's address	A/N	same
Empcity	N	Employer's city	A	same
Empst	N	Employer's state	A	same
Empzip	N	Employer's zipcode	N	same
Emparea	S	Employer's area code	N	same
Empph	S	Employer's telephone number	N	same
Empfl	N			
Jdays	N	Jail days alternative to fine payment?	N	
Postda	Y		Date	
Deftype	N	Defendant type		
Nday	S		Day of the week	
Totfineout	Y	Balance of fine to be paid	\$	same
Totcostout	S	Balance of costs to be paid	\$	same
Finedue	S		\$	
Costdue	Y	Next amount of costs due	\$	

Y = data complete, N = no data entered, S = some values entered in database
Same = value description is same as variable description
A/N = alphanumeric, A = letters/words, N = numbers, \$ = Dollar amount

CONVICTION OFFENSE - Code Sheet

Statute#	Class	Charge Desc
-----	-----	-----
21-43	V	PAWNBROKER REPT
21a-267(a)	MC	DRUG PARAPHRNLA
21a-277	FU	SALE MANUF DRUG
21a-279(a)	FU	POSS NARCOTICS
21a-279(c)	MU	POSS DRUG/MRHNA
22-364	I	ROAMING DOG
22a-250	V	LITTER/DUMP
26-112	MU	SPORT FISH REGS
26-159(a)	V	IL STRIPED BASS
30-77	UM	IL LIQ DISPOSAL
30-89(b)	V	MNR POSS LIQUOR
51-164r	MC	FLR-PAY/PLEAD
53-203	MU	IL FIRE ARM
53-278(c)	MA	GAMBLING DEVICE
53a-108	MB	CRIM TRESPASS 2
53a-110(a)	I	SIMPLE TRESSPASS
53a-117	MB	CRIM MISCHIEF 3
53a-119b	MA	USE MV WO PERM
53a-124	FD	LARCENY 3
53a-125	MA	LARCENY 4
53a-125a	MB	LARCENY 5
53a-125b	MC	LARCENY 6
53a-128	MA	ISSUE BAD CHECK
53a-130	MB	CRIM IMPERSONTN
53a-140	MB	FORGERY 3
53a-167a	MA	INTRFERE/RESIST
53a-172	FD	FLR TO APPEAR 1
53a-173	MA	FLR TO APPEAR 2
53a-180	MA	FILE FLS REPORT
53a-181	MB	BREACH OF PEACE
53a-181a	I	PUBLIC DISTRBNCE
53a-182	MC	DISORDERLY COND
53a-182a	MC	OBS FREE PASSAGE
53a-183	MC	HARRASSMENT
53a-32	FD	PROBATION VIOL
53a-60	FD	ASSAULT 2
53a-61	MA	ASSAULT 3
53a-62	MA	THREATENING
53a-82	MA	PROSTITUTION
UNK	V	UNKNOWN

FINANCIAL ASSESSMENT TO BE IMPOSED

Comparison of first 71 Day Fine cases with pre-project fine amounts

Statute#	Class	Charge Desc	Old Number Fined	New Number Fined	Old Max Fine	New Max Fine	Old Min Fine	New Min Fine	Old Ave Fine	New Ave Fine	Old Median Fine	New Median Fine
21-43	V	PAWHBROKER REPT	1		\$50		\$50		\$50		\$50	
21a-267(a)	MC	DRUG PARAPHRNLA	4	1	\$250	\$99	\$100	\$99	\$163	\$99	\$150	\$99
21a-277(a)	FU	SALE HLCGN/NARC	8	1	\$2,500	\$2,250	\$500	\$2,250	\$1,313	\$2,250	\$1,250	\$2,250
21a-277(b)	FU	SALE CNTLD SBST	1		\$900		\$900		\$900		\$900	
21a-278(a)	FU	SALE ILLGL DRUG	2		\$2,000		\$2,000		\$2,000		\$2,000	
21a-279(a)	FU	POSS NARCOTICS	17	8	\$5,000	\$1,215	\$250	\$90	\$812	\$395	\$500	\$294
21a-279(b)	FU	POSS HALL/HRJNA	2		\$300		\$250		\$275		\$275	
21a-279(c)	MU	POSS DRUG/HRHNA	7	3	\$350	\$459	\$100	\$270	\$229	\$351	\$250	\$324
22-364	I	ROAMING DOG	1		\$50		\$50		\$50		\$50	
22a-250(a)	V	LITTERING	1		\$85		\$85		\$85		\$85	
26-112	MU	SPORT FISH REGS	2		\$50		\$35		\$43		\$43	
26-118	MU	FISH IN RSRVOIR	2		\$100		\$100		\$100		\$100	
29-35(a)	FU	NO PISTOL PRMIT	1		\$90		\$90		\$90		\$90	
30-77	UM	IL LIQ DISPOSAL	1		\$350		\$350		\$350		\$350	
30-89(b)	V	MNR POSS LIQUOR	1		\$225		\$225		\$225		\$225	
51-164r	MC	FLR-PAY/PLEAD	1		\$50		\$50		\$50		\$50	
53-203	MU	IL FIRE ARM	1		\$100		\$100		\$100		\$100	
53-21	FU	RISK OF INJURY	2		\$250		\$200		\$225		\$225	
53-278(c)(d)	MA	GAMBLING DEVICE	2		\$350		\$250		\$300		\$300	
53a-103	FD	BURGLARY 3	1		\$50		\$50		\$50		\$50	
53a-107	MA	CRIM TRESPASS 1	1		\$90		\$90		\$90		\$90	
53a-108	NB	CRIM TRESPASS 2										
53a-109	MC	CRIM TRESPASS 3	3		\$200		\$90		\$127		\$90	
53a-116	MA	CRIM MISCHIEF 2		1		187		187		187		187
53a-117	NB	CRIM MISCHIEF 3	1	1	\$100	\$220	\$100	\$220	\$100	\$220	\$100	\$220
53a-119b	MA	USE MV WO PERM		3		\$356		\$162		\$251		\$234
53a-124	FD	LARCENY 3										
53a-125	MA	LARCENY 4	2	4	\$250	\$516	\$100	\$124	\$175	\$317	\$175	\$314
53a-125a	NB	LARCENY 5	1	2	\$250	\$375	\$250	\$324	\$250	\$350	\$250	\$350
53a-125b	MC	LARCENY 6	36	25	\$500	\$252	\$25	\$17	\$147	\$109	\$100	\$105
53a-128	MA	ISSUE BAD CHECK	3		\$150		\$50		\$100		\$100	
53a-130	NB	CRIM IMPERSONTH	2		\$100		\$100		\$100		\$100	
53a-140	NB	FORGERY 3		1		\$14		\$14		\$14		\$14
53a-157	MA	FALSE STATEMENT		1		54		54		54		54
53a-167a	MA	INTRFERE/RESIST	26	7	\$500	\$320	\$35	\$108	\$135	\$202	\$95	\$195
53a-172	FD	FLR TO APPEAR 1	1		\$250		\$250		\$250		\$250	
53a-173	MA	FLR TO APPEAR 2	16	5	\$200	\$150	\$50	\$9	\$116	\$64	\$100	\$36
53a-180	MA	FILE FLS REPORT	1		\$100		\$100		\$100		\$100	
53a-181	NB	BREACH OF PEACE	18	5	\$250	\$226	\$35	\$81	\$94	\$168	\$75	\$200
53a-181a	I	PUBLIC DISTRBNCE	1		\$90		\$90		\$90		\$90	
53a-182	MC	DISORDERLY COND	21		\$200		\$35		\$67		\$50	
53a-182a	MC	OBS FREE PASSAGE	1		\$50		\$50		\$50		\$50	
53a-185	MC	LOITER SCHOOL	1		\$50		\$50		\$50		\$50	
53a-32	FD	PROBATION VIOL										
53a-60	FD	ASSAULT 2	2		\$1,000		\$75		\$538		\$538	
53a-61	MA	ASSAULT 3	5	1	\$250	\$180	\$50	\$180	\$138	\$180	\$150	\$180
53a-62	MA	THREATENING	8	2	\$500	\$210	\$50	\$97	\$185	\$154	\$90	\$154
53a-82	MA	PROSTITUTION										
7-148**	V	TOWN ORD-VIOL	1		\$100		\$100		\$100		\$100	
Total Cases			209	71	\$5,000	\$2,250	\$25	\$9	\$257	\$219	\$100	\$160