

Immigrant population

Immigrants make up an important part of local communities in the District of Columbia metro area and the United States. Nonetheless, no noncitizen is exempt from the risk of deportation, which threatens the stability and family unity of immigrants and U.S.-born people alike.

District of Columbia metro area



93,800 immigrants reside in the **District of Columbia**, or **14 percent** of the District of Columbia's population.

United States



47.8 million immigrants reside in the **United States**, or **14 percent** of the total population.

Noncitizen population

46.6K

46,600 noncitizens are living in the **District of Columbia**.

22.9M

22.9 million noncitizens are living in the **United States**.

Children and families

District of Columbia

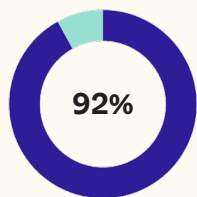
31.3K
children

There are **31,300** children in the District of Columbia with at least one **immigrant parent**.



1 in 4

One in four children in the District of Columbia has at least one **immigrant parent**.



The **vast majority of children** in the District of Columbia with at least one immigrant parent (**92 percent**) were born in the United States.

United States

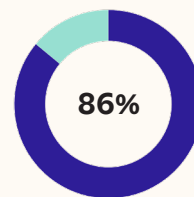
17.9M
children

There are **17.9 million** children in the United States with at least one **immigrant parent**.



1 in 4

One in four children in the United States has at least one **immigrant parent**.



The **vast majority of children** in the United States with at least one immigrant parent (**86 percent**) were born in the United States.

Local community ties



55,600 immigrants residing in the District of Columbia have lived in the United States **since 2009 or earlier**.



At least **16,400** homes in the District of Columbia are **owned by immigrants**.



3,600 immigrants in the District of Columbia are **entrepreneurs**.



13,700 immigrants in the District of Columbia are **students** enrolled in pre-K through college or graduate school.

Immigrants in the economy

Immigrants in the District of Columbia and the United States are indispensable members of the workforce and contribute to the economy by paying federal, state, and local taxes.

Tax contributions*

District of Columbia

\$1.7B Immigrant-led households **earned \$1.7 billion.D**

\$171.3M Immigrants contributed **\$171.3 million** in combined **state and local taxes.D**

\$332.7M Immigrants contributed **\$332.7 million** in **federal taxes.D**

\$1.2B This means immigrant-led households have an estimated **\$1.2 billion** in **spending power.D**

United States

\$2.4T Immigrant-led households **earned \$2.4 trillion.**

\$232.1B Immigrants contributed **\$232.1 billion** in combined **state and local taxes.**

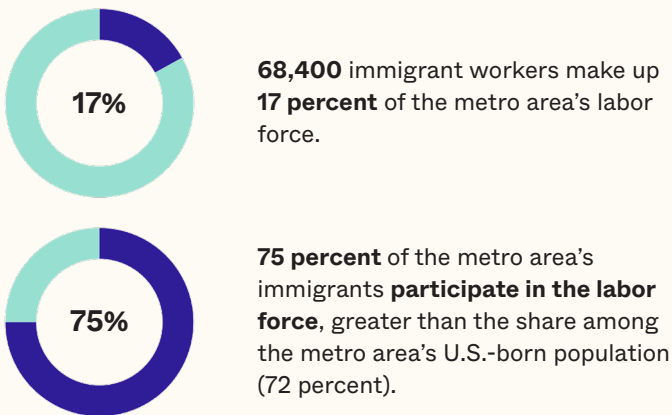
\$419.8B Immigrants contributed **\$419.8 billion** in **federal taxes.**

\$1.7T This means immigrant-led households have an estimated **\$1.7 trillion** in **spending power.**

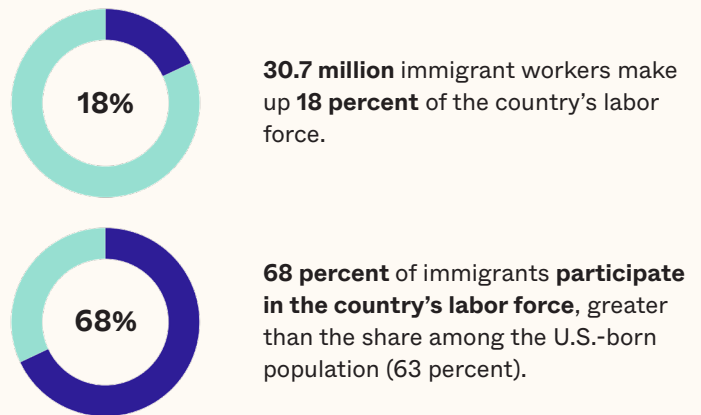
*Earnings, tax contribution, and spending power data reflect annual figures for 2023.

Employment and labor force participation

District of Columbia



United States



Sources

American Immigration Council:

"Map the Impact," available through <https://www.americanimmigrationcouncil.org> (accessed February 2025).

The Integrated Public Use Microdata Series (IPUMS-USA):

Steven Ruggles, Sarah Flood, Matthew Sobek, Daniel Backman, Annie Chen, Grace Cooper, Stephanie Richards, Renae Rodgers, and Megan Schouweiler. IPUMS USA: Version 15.0 [dataset]. Minneapolis, MN: IPUMS, 2024. <https://doi.org/10.18128/D010.V15.0>

U.S. Census Bureau:

"Age and Nativity of Own Children under 18 Years in Families and

Subfamilies by Nativity of Parents," 2023 American Community Survey (ACS) 1-Year Estimates, available through <https://data.census.gov>.

"Selected Characteristics of the Foreign-Born Population by Period of Entry into the United States," 2023 ACS 5-Year Estimates, available through <https://data.census.gov>.

"Selected Characteristics of the Native and Foreign-Born Populations," 2023 ACS 5-Year Estimates, available through <https://data.census.gov>.